

testa ad angolo - angle head

TA07P.T



caratteristiche/features



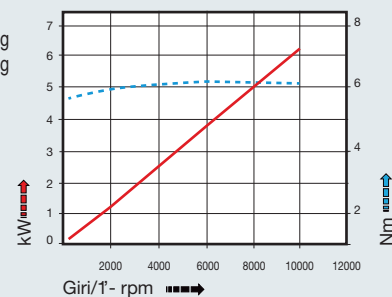
peso/weight



rotazione/rotation

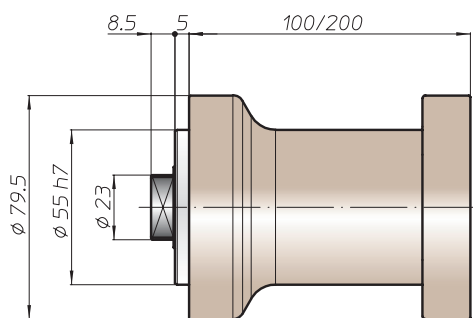
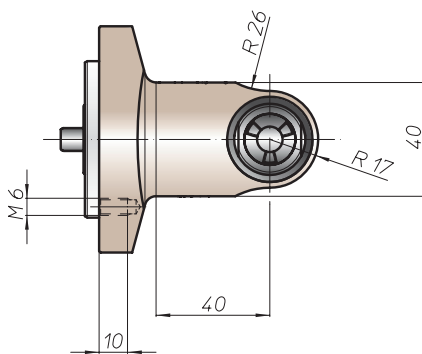


prestazioni/performance

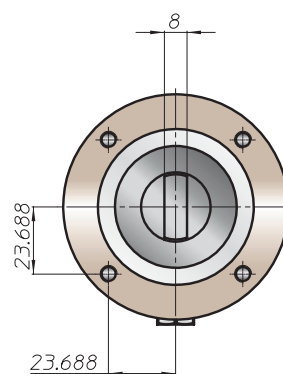
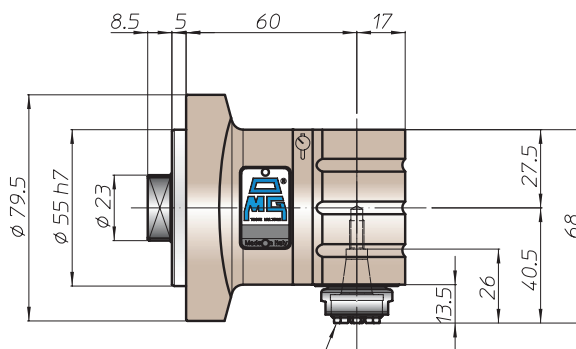


tipi mandrino disponibili / available spindle types

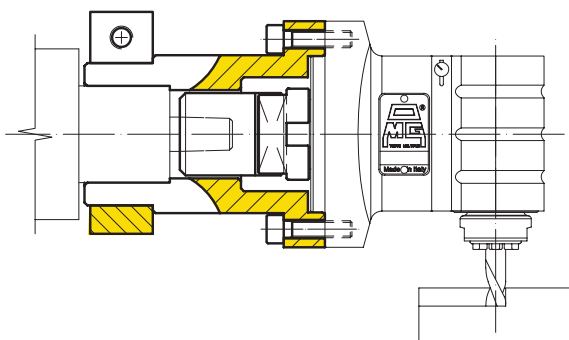
3 Weldon Whistle-Notch
Ø8-Ø10



Prolunga
Extension



esempio di collegamento - connection example



FH

BAH

TA-CP

TA

MOX

HT

VH

TSI/TSX

T

MT-TC-TC3

Accessori
Accessories

Appendice tecnica
Technical supplement



TA10P.T

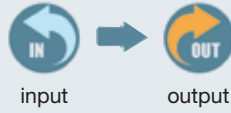
caratteristiche/features



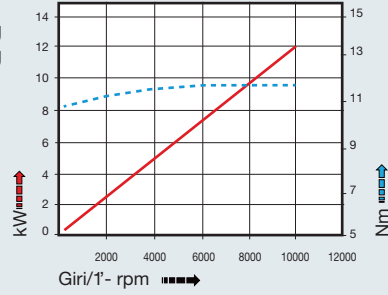
peso/weight



rotazione/rotation

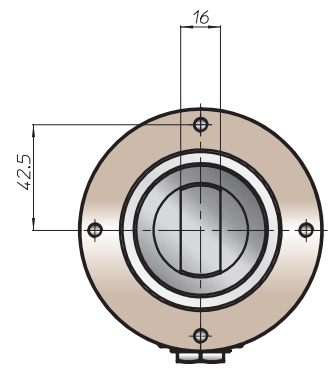
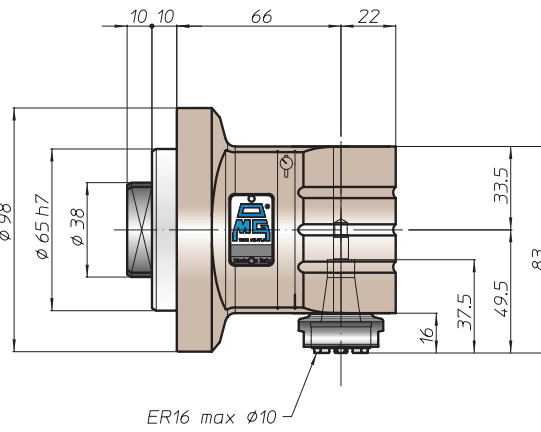
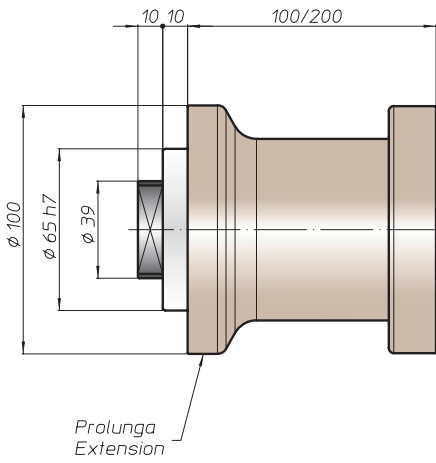
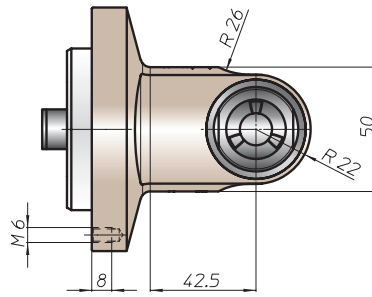


prestazioni/performance

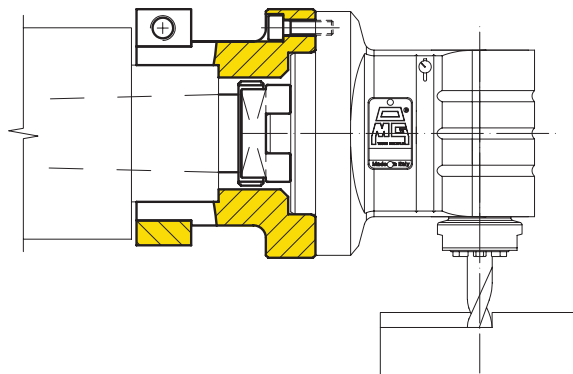


tipi mandrino disponibili / available spindle types

- | | | |
|---------------------|---|----------------------------------|
| 1 DIN6499-ER | 2 Albero portafrese
Milling shaft | 3 Weldon
Whistle-Notch |
| ER20 | Ø16 | Ø10 |



esempio di collegamento - connection example



testa ad angolo - angle head

TA13P.T



caratteristiche/features



peso/weight



3,5 kg

rotazione/rotation

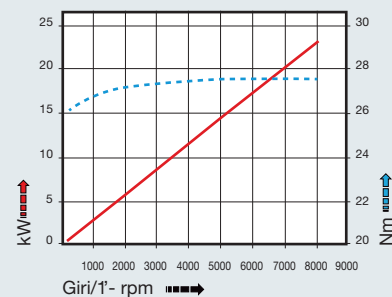


input



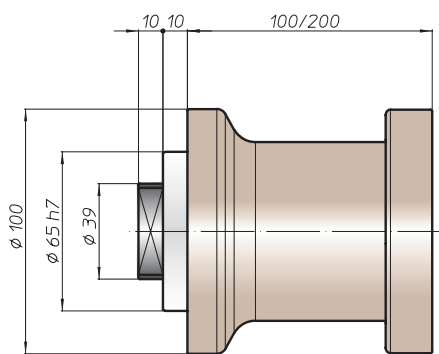
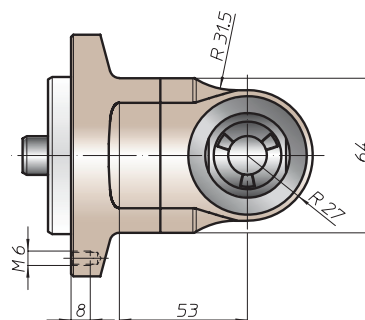
output

prestazioni/performance

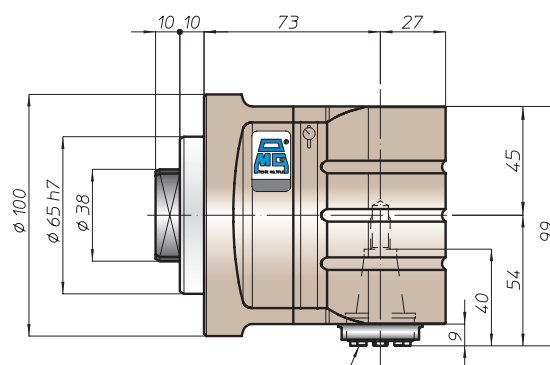


tipi mandrino disponibili / available spindle types

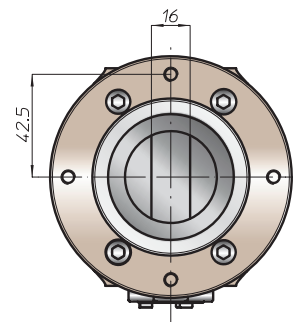
- | | | |
|---------------------|---|----------------------------------|
| 1 DIN6499-ER | 2 Albero portafresa
Milling shaft | 3 Weldon
Whistle-Notch |
| ER25 | Ø16-Ø22 | Ø16 |



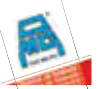
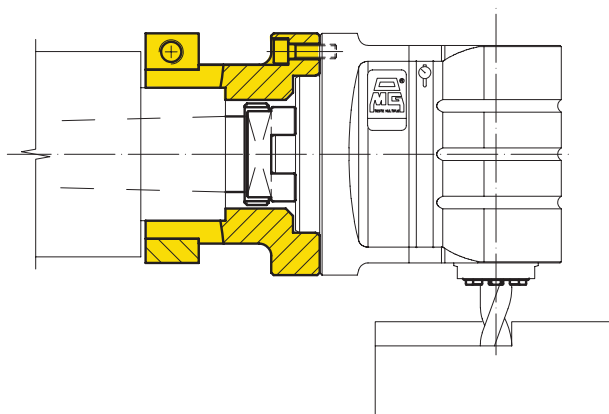
Prolunga
Extension



ER20 max ø13



esempio di collegamento - connection example



TA16P.T

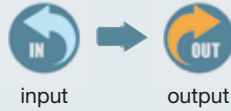
caratteristiche/features



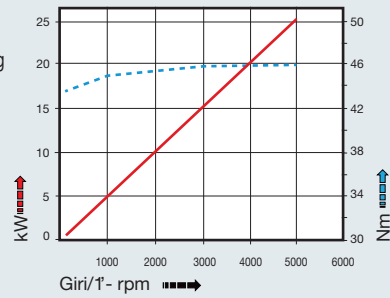
peso/weight



rotazione/rotation

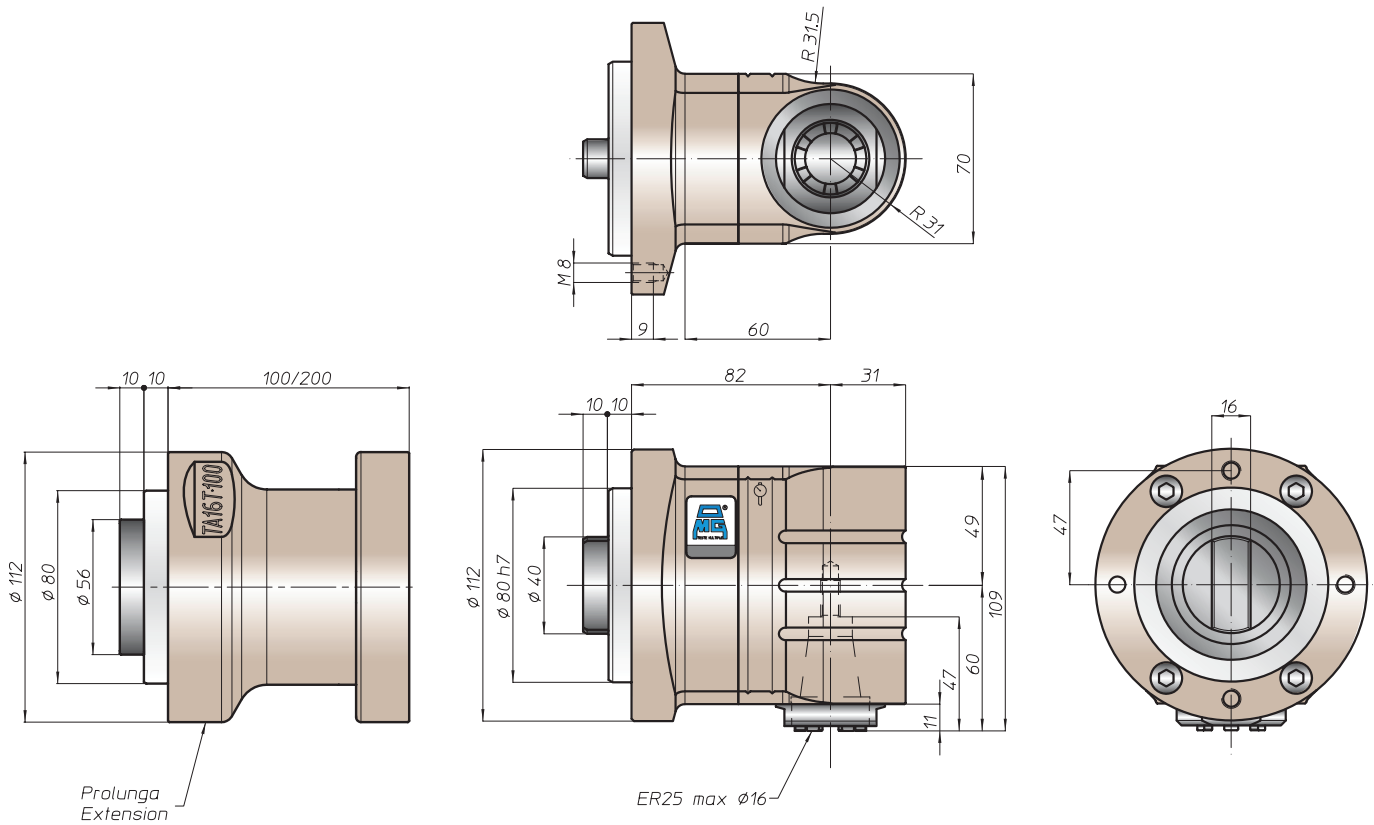


prestazioni/performance

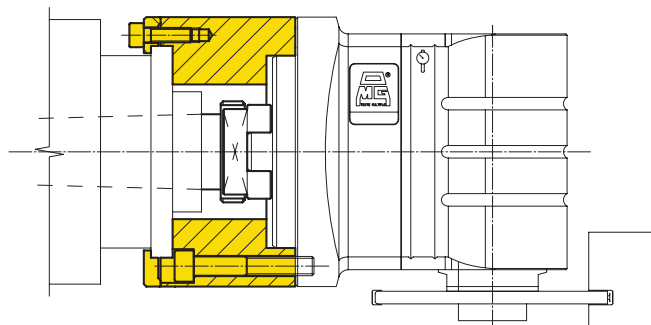


tipi mandrino disponibili / available spindle types

1 DIN6499-ER	2 Albero portafresa Milling shaft	3 Weldon Whistle-Notch	4 DIN69893-HSK	5 COROMANT CAPTO®	6 ABS Licenza KOMET®
ER32	Ø16-Ø22-Ø27-Ø32	Ø20	HSK32	C3	ABS32



esempio di collegamento - connection example



TA20.PT



caratteristiche/features



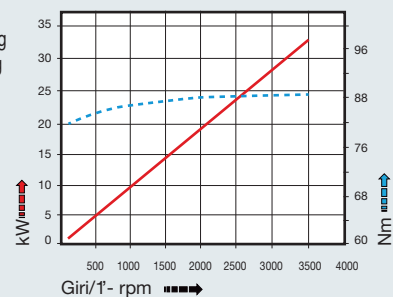
peso/weight



rotazione/rotation

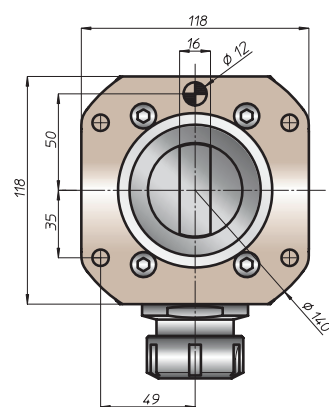
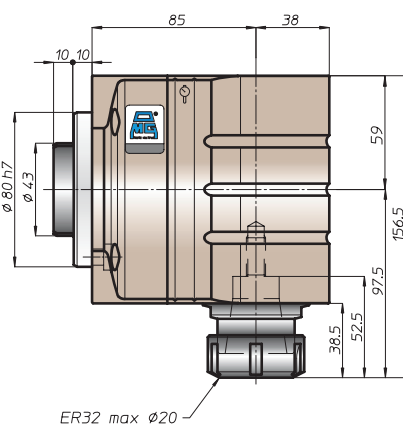
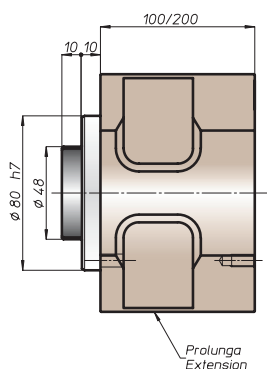
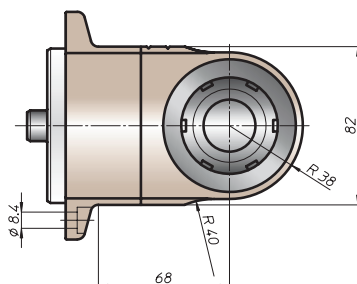


prestazioni/performance

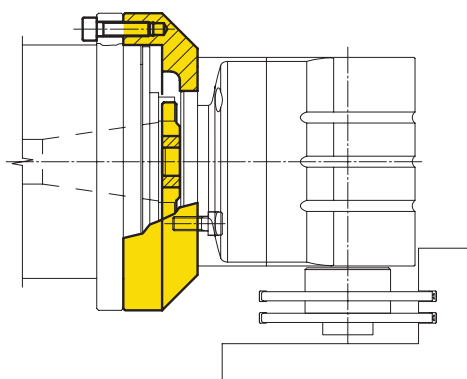


tipi mandrino disponibili / available spindle types

- | | | | | | |
|------------------------------------|---|--|---------------------------------------|--|--|
| 1 DIN6499-ER
ER40 | 2 Albero portafresa
Milling shaft
Ø22-Ø27-Ø32 | 3 Weldon
Whistle-Notch
Ø20-Ø25 | 4 DIN69893-HSK
HSK40 | 5 COROMANT
CAPTO®
C4 | 6 ABS
Licenza KOMET®
ABS40 |
|------------------------------------|---|--|---------------------------------------|--|--|



esempio di collegamento - connection example



FH
BAH
TA.CP
TA
MOX
HT
VH
TSI/TSX
T
MT-TC-TC3
Accessori
Accessories
Appendice tecnica
Technical supplement



TA20.30.T

caratteristiche/features



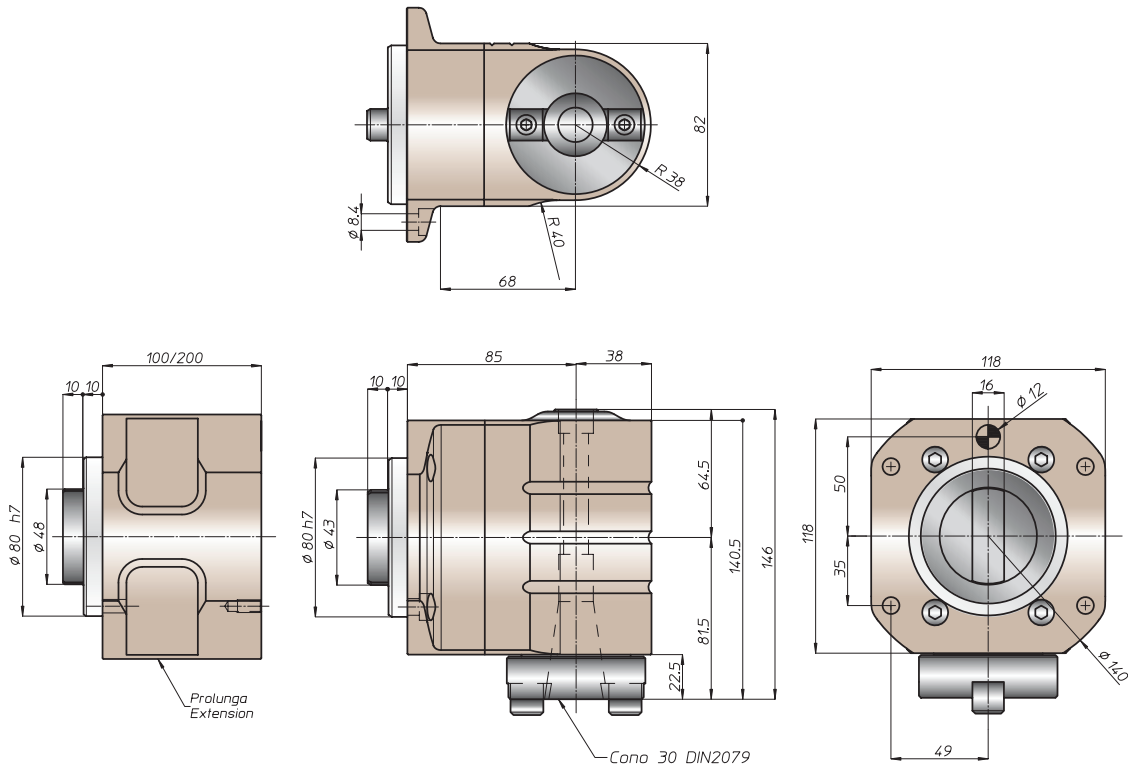
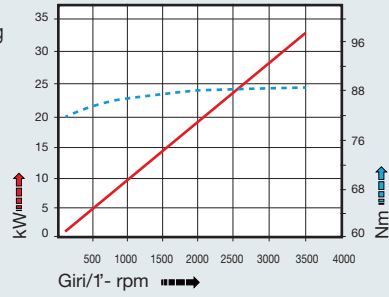
peso/weight



rotazione/rotation



prestazioni/performance



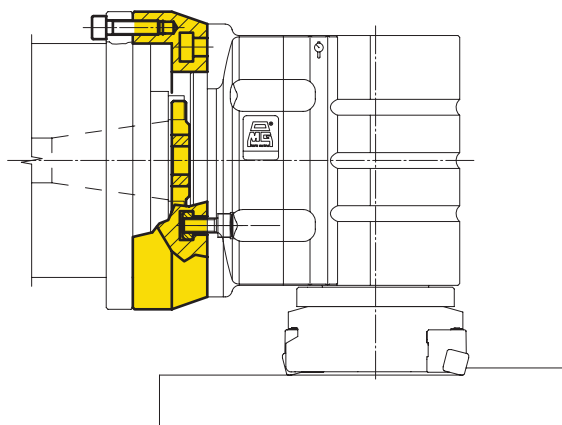
Nota:

- nel mandrino DIN2079 si possono utilizzare coni DIN2080-30, DIN69871-A30, MAS403-BT30

Note:

- on the spindle DIN2079 you can use shank DIN2080-30, DIN69871-A30, MAS403-BT30

esempio di collegamento - connection example



FH

BAH

TA.CP

TA

MOX

HT

VH

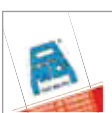
TSI/TSX

T

MT-TC-TC3

Accessori
Accessories

Appendice tecnica
Technical supplement



TA26.PT



caratteristiche/features



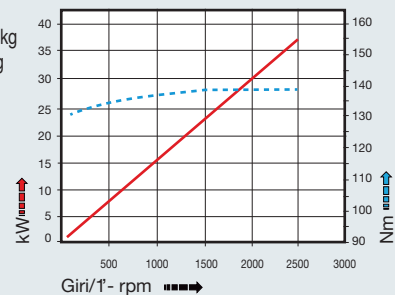
peso/weight



rotazione/rotation

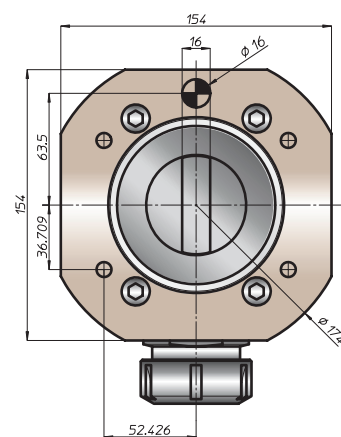
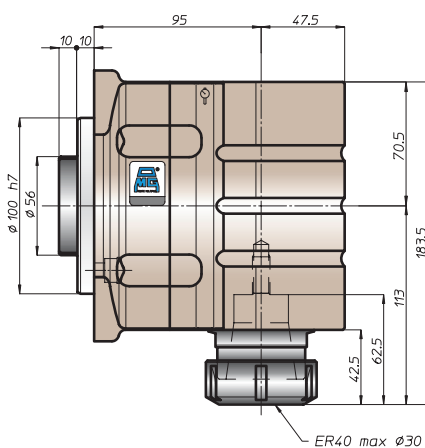
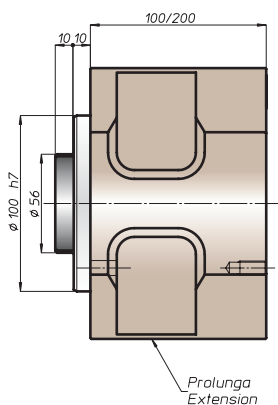
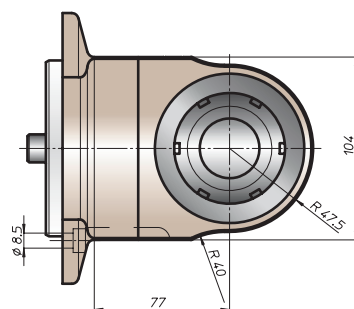


prestazioni/performance

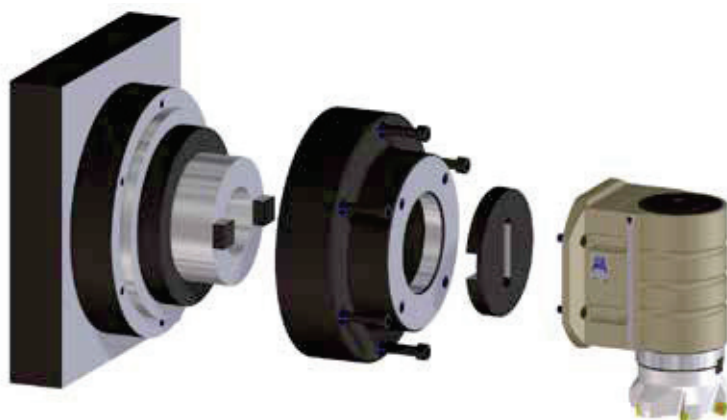


tipi mandrino disponibili / available spindle types

- | | | | | |
|--|---|--------------------------------|-----------------------------------|---|
| 2 Albero portafrese
Milling shaft
Ø16-Ø27-Ø32 | 3 Weldon
Whistle-Notch
Ø32 | 4 DIN69893-HSK
HSK63 | 5 COROMANT
CAPTO®
C4 | 6 ABS
Licenza KOMET®
ABS50 |
|--|---|--------------------------------|-----------------------------------|---|



esempio di collegamento - connection example



FH
BAH
TA-CP
TA
MOX
HT
VH
TSI/TSX
T
MT-TC-TC3
Accessori
Accessories
Appendice tecnica
Technical supplement



TA26.40.T

caratteristiche/features



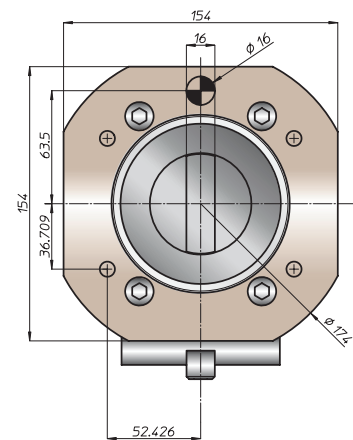
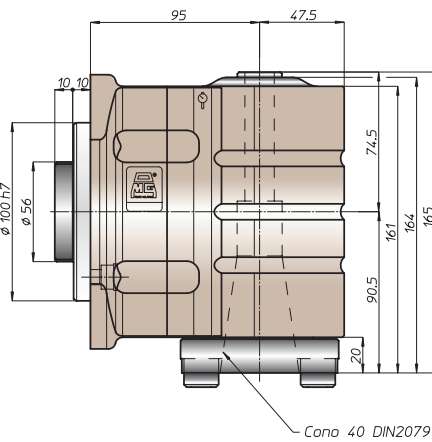
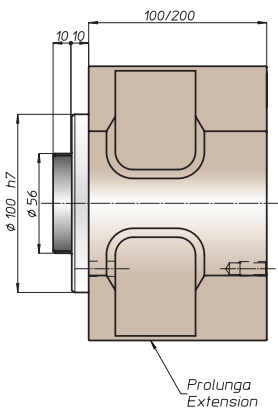
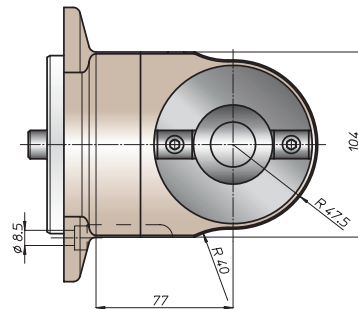
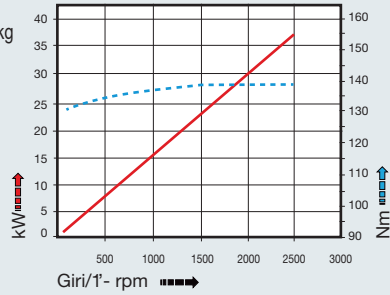
peso/weight



rotazione/rotation



prestazioni/performance



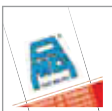
Nota:

- nel mandrino DIN2079 si possono utilizzare coni DIN2080-40, DIN69871-A40, MAS403-BT40

Note:

- on the spindle DIN2079 you can use shank DIN2080-40, DIN69871-A40, MAS403-BT40

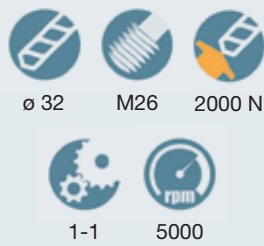
esempio di collegamento - connection example



TA40.T



caratteristiche/features



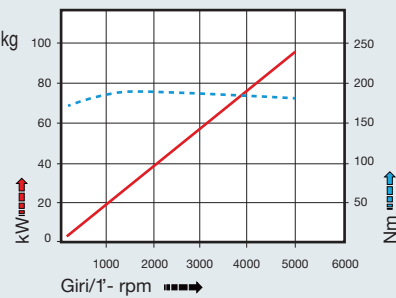
peso/weight



rotazione/rotation

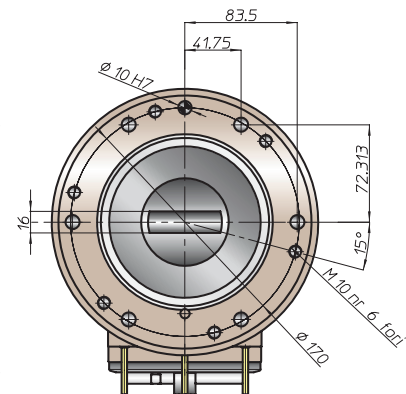
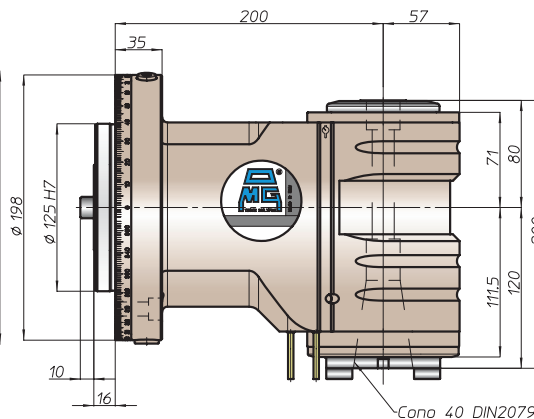
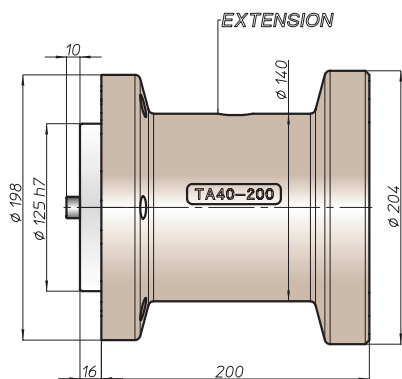
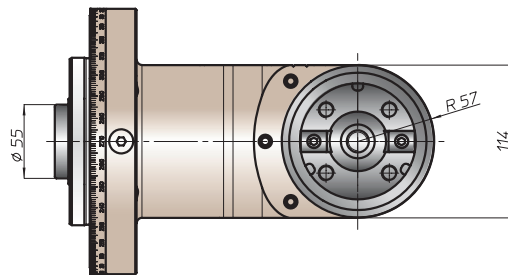


prestazioni/performance



tipi mandrino disponibili / available spindle types

- 4 DIN69893-HSK HSK63
- 5 COROMANT CAPTO® C5



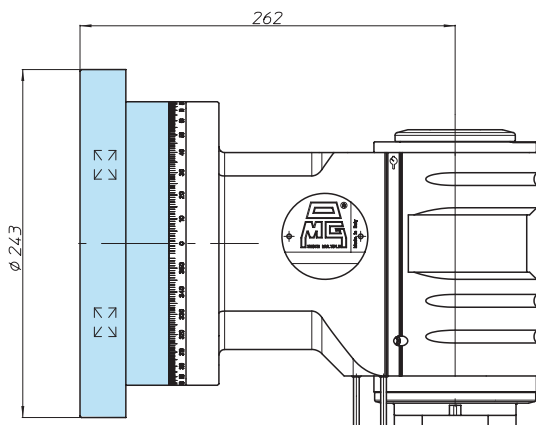
Equipaggiamento standard:

- pressurizzazione mandrino
- n. 3 ugelli orientabili vicino al mandrino
- nel mandrino DIN2079 si possono utilizzare coni DIN2080-40, DIN69871-A40, MAS403-BT40

Standard equipment:

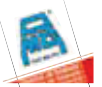
- spindle front pressurization
- nr 3 adjustable nozzle near the spindle
- on the spindle DIN2079 you can use shank DIN2080-40, DIN69871-A40, MAS403-BT40

utilizzo su asse C-310 manuale - example with manual C axis C-310



- Nuovo Asse C a rotazione manuale
- Compatto, semplice e preciso
- Bloccaggio rotazione su cava a T
- Rotazione libera su cuscinetto a rulli incrociati
- Facilità di posizionamento

- New C Axis with manual rotation
- Space-saving, user friendly and precise
- Rotation lock on T slot
- Free rotation on crossed roller bearings
- Easy set up



testa ad angolo - angle head

TA50.T



caratteristiche/features



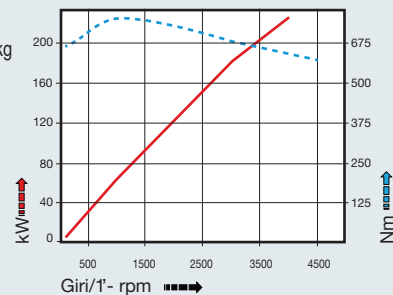
peso/weight



rotazione/rotation

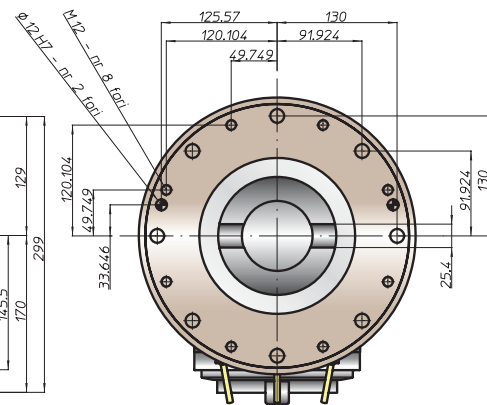
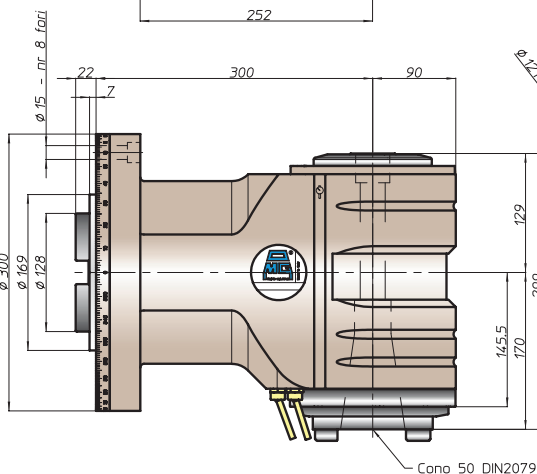
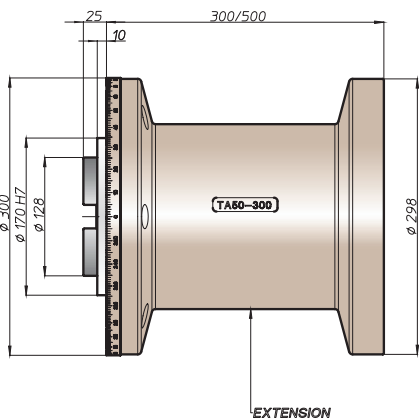
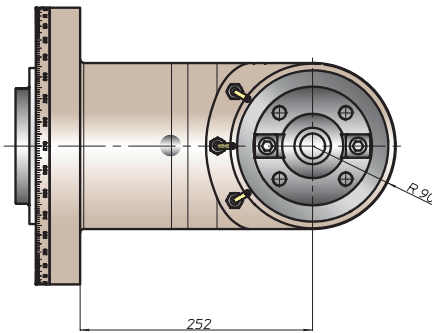


prestazioni/performance



tipi mandrino disponibili / available spindle types

- 4 DIN69893-HSK HSK100
- 5 COROMANT CAPTO® C8



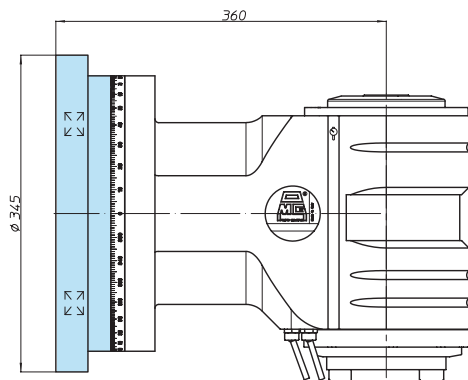
Equipaggiamento standard:

- pressurizzazione mandrino
- n. 3 ugelli orientabili vicino al mandrino
- nel mandrino DIN2079 si possono utilizzare coni DIN2080-50, DIN69871-A50, MAS403-BT50

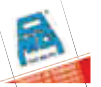
Standard equipment:

- spindle front pressurization
- nr 3 adjustable nozzle near the spindle
- on the spindle DIN2079 you can use shank DIN2080-50, DIN69871-A50, MAS403-BT50

utilizzo su asse C-310 manuale - example with manual C axis C-310



- Nuovo Asse C a rotazione manuale
- Compatto, semplice e preciso
- Bloccaggio rotazione su cava a T
- Rotazione libera su cuscinetto a rulli incrociati
- Facilità di posizionamento
- New C Axis with manual rotation
- Space-saving, user friendly and precise
- Rotation lock on T slot
- Free rotation on crossed roller bearings
- Easy set up



TA50.TD

caratteristiche/features



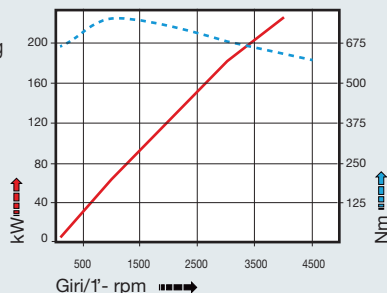
peso/weight



rotazione/rotation

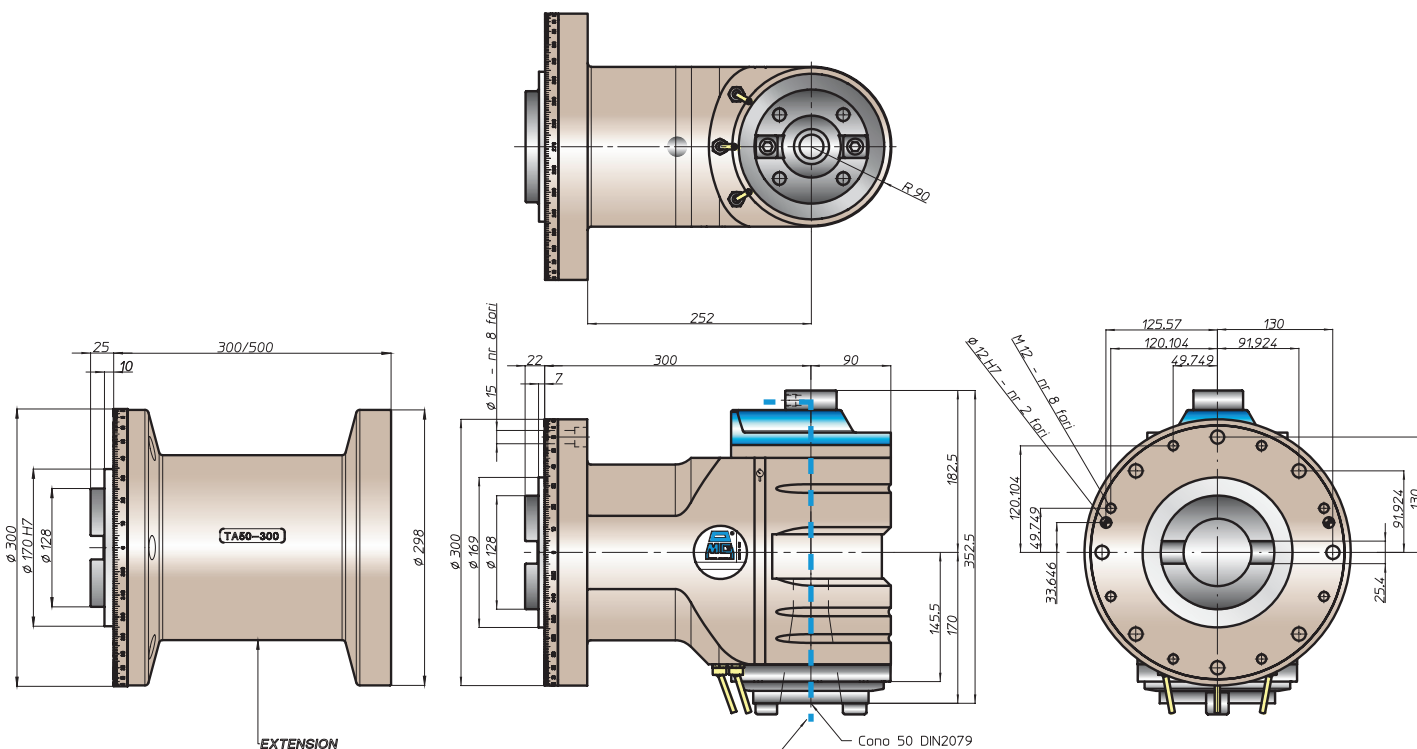


prestazioni/performance



tipi mandrino disponibili / available spindle types

- 4** DIN69893-HSK **HSK100**
- 5** COROMANT CAPTO® **C8**



Equipaggiamento standard:

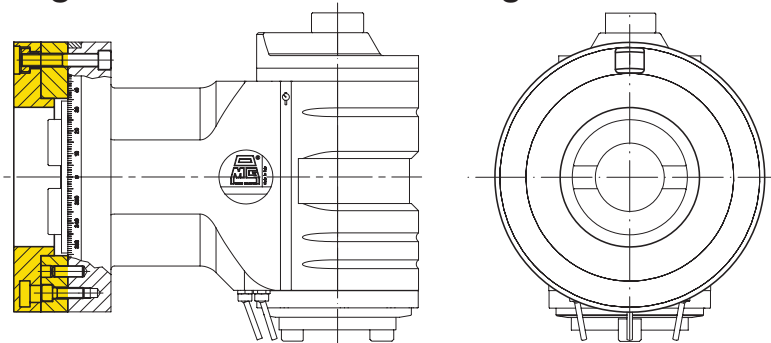
- pressurizzazione mandrino
- n. 3 ugelli orientabili vicino al mandrino
- nel mandrino DIN2079 si possono utilizzare coni DIN69871-A50, MAS403-BT50

refrigerante coolant way

Standard equipment:

- spindle front pressurization
- nr 3 adjustable nozzle near the spindle
- on the spindle DIN2079 you can use shank DIN69871-A50, MAS403-BT50

esempio di collegamento rotante - rotating connection example



FH

BAH

TA-CP

TA

MOx

HT

VH

TSI/TSX

T

MT-TC-TC3

Accessori
Accessories

Appendice tecnica
Technical supplement

TA..T Extended Gallery



TA..T Extended Gallery



FH

BAH

TA.CP

TA

MOX

HT

VH

TSI/TSX

T

MT-TC-TC3

Accessori
Accessories

Appendice tecnica
Technical supplement

