

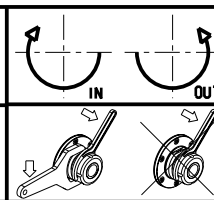
- Chiave inclusa
- Key included
- Schlüssel inbegriffen

| Cod. MT     | Mandrino<br>Spindle<br>Spindel | I   | RPM   | Coppia Max<br>Max Torque<br>Max Drehmoment | Reversibile lato<br>mandrino/contromandrino<br>Reversible sub/main<br>spindle side<br>Umkehrbare Spindel-seite/<br>Gegenspindel-seite | Lubrificazione int.<br>Coolant through<br>Innenkuehlung | Lubrificazione est.<br>Ext. coolant<br>Aussenkuehlung | CHIAVI NON INCLUSE<br>Keys not included<br>Schlüssel nicht einbegriffen |             |             |
|-------------|--------------------------------|-----|-------|--------------------------------------------|---------------------------------------------------------------------------------------------------------------------------------------|---------------------------------------------------------|-------------------------------------------------------|-------------------------------------------------------------------------|-------------|-------------|
|             |                                |     |       |                                            |                                                                                                                                       |                                                         |                                                       | C HUB30                                                                 | C HUB19_SP3 | C HTAER16ZC |
| DW 01891316 | ERA16                          | 1:2 | 12000 | 15Nm                                       | X                                                                                                                                     | -                                                       | X                                                     | C HUB30                                                                 | C HUB19_SP3 | C HTAER16ZC |
| DW 01891416 | ERA16                          | 1:2 | 12000 | 15Nm                                       | X                                                                                                                                     | P=70bar                                                 | X                                                     | C HUB30                                                                 | C HUB19_SP3 | C HTAER16ZC |

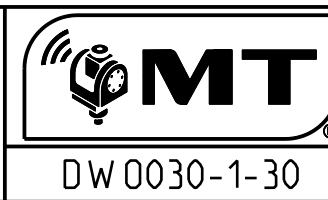
### DN SOLUTIONS (DOOSAN) BMT 45

MOD: LYNX 220 M/LM/LMS/LY/LSY - LYNX 2100 M/LM/LMS/LY/LSY - LYNX 2105LY - PUMA MX1600 16ST. - PUMA TW2100M 10ST.  
PUMA TT1300SY/SYY

MODULO MOTORIZZATO RADIALE MOLTIPLICATO I=1:2 DISASSATO IN Z 36mm  
Radial geared-up I=1:2 driven tool re-directed in Z by 36mm  
Radial angetriebenes Werkzeug uebersetzt I=1:2 achsversetzt in Z um 36mm



**M.T. srl**  
Via Casino Albini 480  
Tel. 0541/956034-957884  
Fax 0541/956341  
47842 S. GIOVANNI IN M. (RN)  
e-mail: mtma@mtmarchetti.com  
<http://www.mtmarchetti.com>



DW 0030-1-30

Subject to change without notice.

09/2024