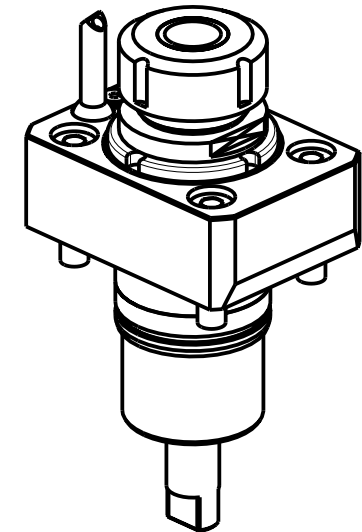
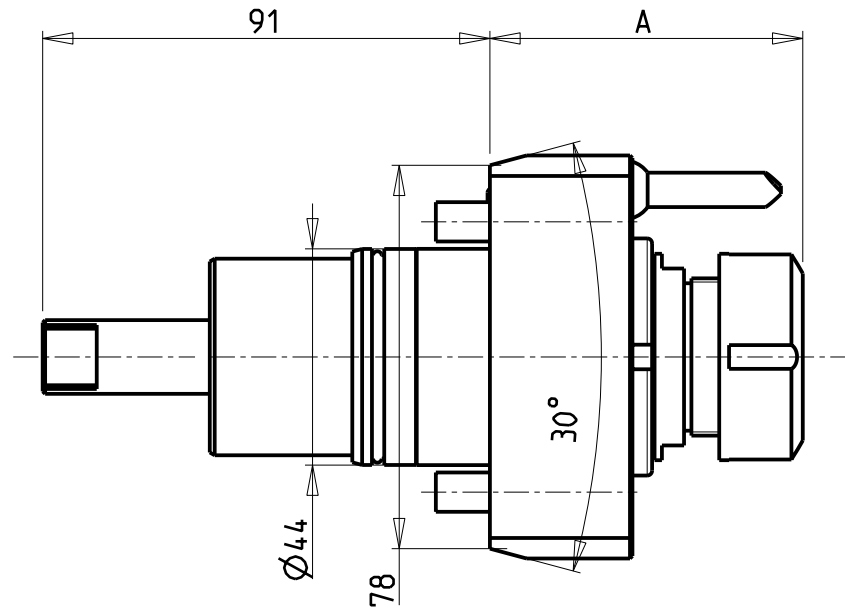
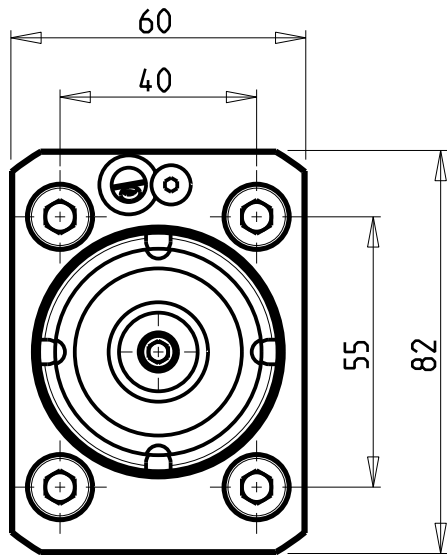


CUSCINETTI MAGGIORATI PER LAVORAZIONI PESANTI

Reinforced bearings for
heavy machining

Vergroesserte Lager fuer
schwerere Bearbeitungen



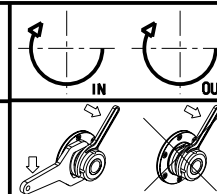
- Chiave inclusa
- Key included
- Schluessel inbegriffen

Cod. MT	Mandrino Spindel Spindel	I	RPM	Coppia Max Max Torque Max Drehmoment	Lubrificazione int. Coolant through Innenkuhlung	Lubrificazione est. Ext. coolant Aussenkuhlung	A	CHIAVI NON INCLUSE Keys not included Schluessel nicht einbegriffen		
NKM2330320	ERA20	1:1	12000	35Nm	-	X	50.7	OKU0290009	CHUB22	NEW
NKM2330420	ERA20	1:1	12000	35Nm	P=70bar	X	58	OKU0290009	CHUB22	NEW
NKM2330125	ER25	1:1	12000	35Nm	-	X	62.7	OKU0290009	CHSTER25	NEW
NKM2330225	ER25	1:1	12000	35Nm	P=70bar	X	69.7	OKU0290009	CHSTER25	NEW

GOODWAY
MOD: GTZ-1500

MODULO MOTORIZZATO RADIALE MAGGIORATO 12000 RPM
Radial reinforced driven tool 12000 rpm
Radial angetriebenes Werkzeug vergroessert 12000 rpm

Subject to change without notice.



M.T. srl

Via Casino Albini 480
Tel. 0541/956034-957884
Fax 0541/956341
47842 S. GIOVANNI IN M. (RN)
e-mail: mtma@mtmarchetti.com
http://www.mtmarchetti.com



GDW 020-6-01