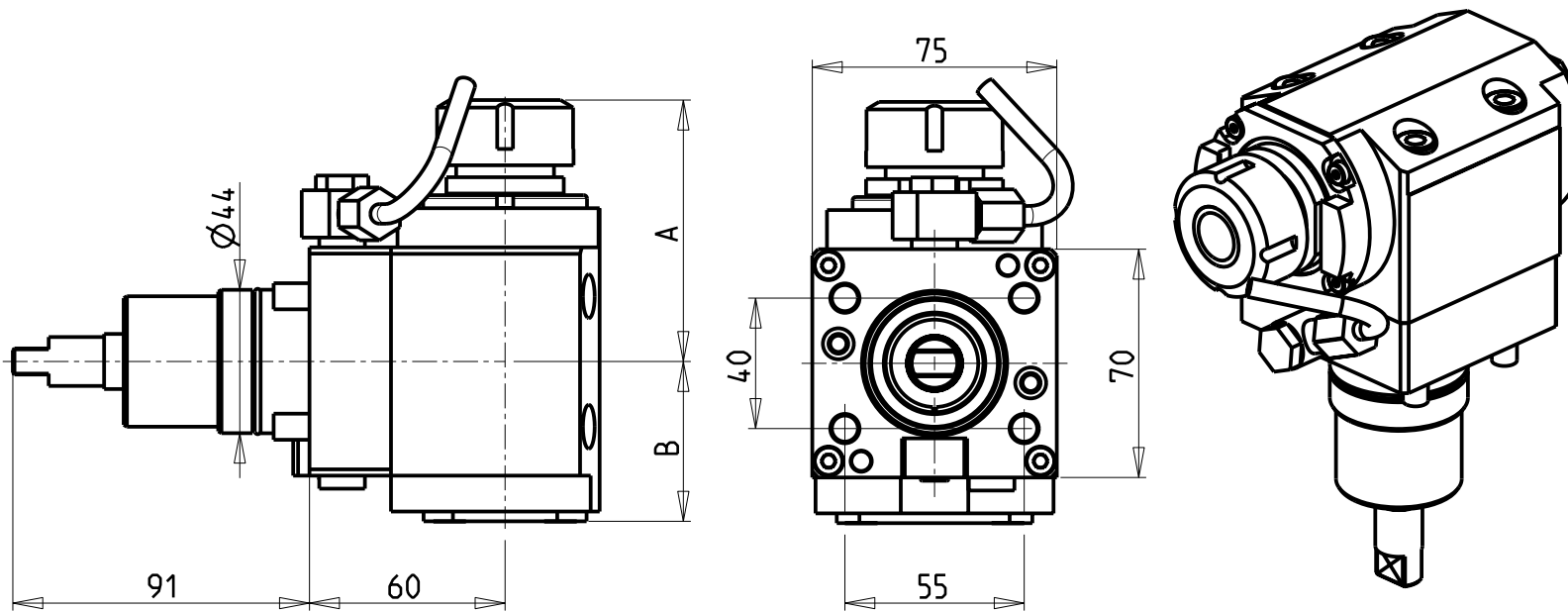


**ATTENZIONE - ATTENTION - ACHTUNG**

- Per lo smontaggio degli utensili utilizzare sempre la chiave di contrasto come indicato nel manuale d'uso.
- For disassembly of the tools use always the contrast key as mentioned in the user instructions.
- Fuer das Abmontieren der Werkzeuge immer den Gegenschlüssel benutzen wie in der Bedienungsanleitung erwaeht.



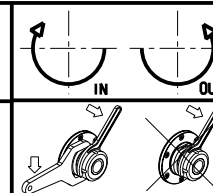
- Chiave inclusa
- Key included
- Schlüssel inbegriffen

Cod. MT	Mandrino Spindle Spindel	I	RPM	Coppia Max Max Torque Max Drehmoment	Reversibile lato mandrino/contromandrino Reversible sub/main spindle side Umkehrbare Spindel-seite/ Gegenspindel-seite	Lubr. interna Coolant through Innenkuhlung	Lubr. esterna Ext. coolant Aussenkuhlung	A	B	CHIAVI NON INCLUDE Keys not included Schluessel nicht einbegriffen	
NKM2340125	ER25	1:1	12000	35Nm	X	-	X	82.16	49	OKU0290009	CHSTER25
NKM2340225	ER25	1:1	12000	35Nm	X	P=70bar	X	82.16	59	OKU0290009	CHSTER25
NKM2340520	ERA20	1:1	12000	35Nm	X	-	X	69.23	49	OKU0290009	CHUB22
NKM2340620	ERA20	1:1	12000	35Nm	X	P=70bar	X	69.23	59	OKU0290009	CHUB22

NEW  
NEW  
NEW  
NEW

GOODWAY  
MOD: GTZ-1500

MODULO MOTORIZZATO ASSIALE 12000 RPM H=60mm  
Axial driven tool 12000 rpm H=60mm  
Axial engetriebenes Werkzeug 12000 rpm H=60mm



**M.T. srl**  
Via Casino Albini 480  
Tel. 0541/956034-957884  
Fax 0541/956341  
47842 S. GIOVANNI IN M. (RN)  
e-mail: mtma@mtmarchetti.com  
http://www.mtmarchetti.com



GDW 150-6-11

Subject to change without notice.

09/2024