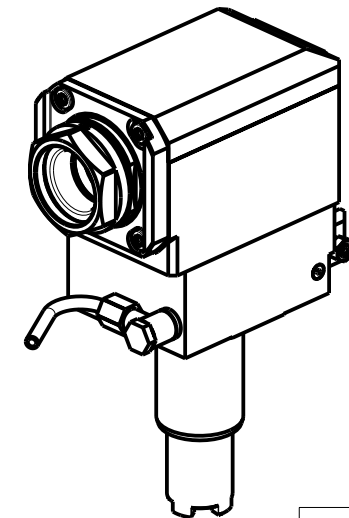
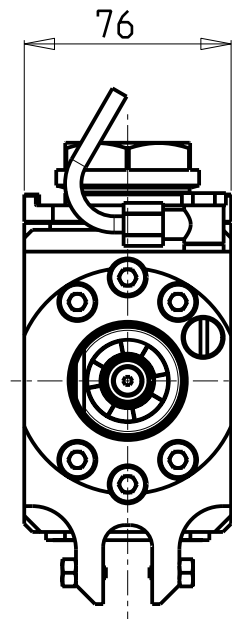
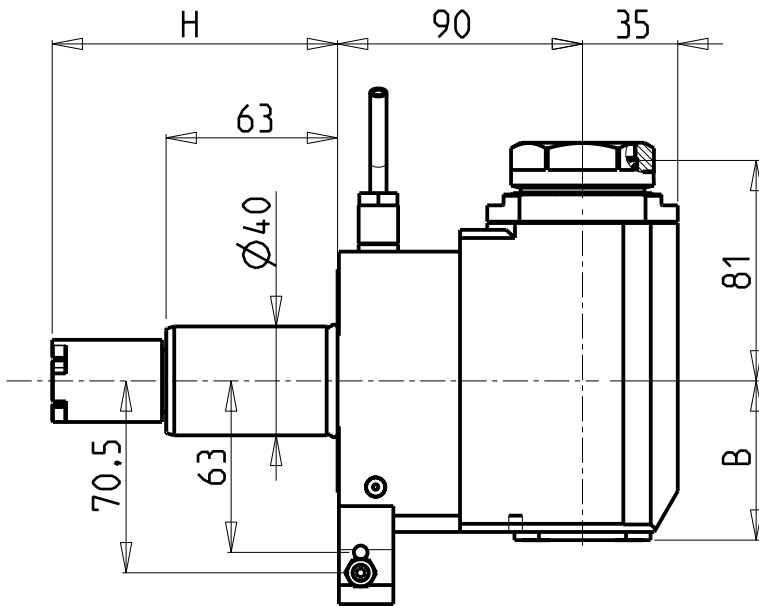


**ATTENZIONE - ATTENTION - ACHTUNG**

- Per lo smontaggio degli utensili utilizzare sempre la chiave di contrasto come indicato nel manuale d'uso.
- For disassembly of the tools use always the contrast key as mentioned in the user instructions.
- Fuer das Abmontieren der Werkzeuge immer den Gegenschlüssel benutzen wie in der Bedienungsanleitung erwaeht.



- Chiave inclusa
- Key included
- Schlüssel inbegriffen

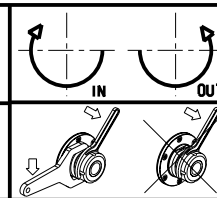
PER PORTAUTENSILI MODULARI MTSK-40 VEDI PAG. TBL300-1-40  
 FOR MTSK-40 QUIK CHANGE TOOLHOLDERS CLAMPINGS SEE PAGE TBL300-1-40  
 FUER MTSK-40 MODULARE WERKZEUGAUFNAHMEN SIEHE SEITE TBL300-1-40

| Cod. MT    | Mandrino Spindle Spindel | I   | RPM  | Coppia Max Max Torque Max Drehmoment | Lubrificazione int. Coolant through Innenkuehlung | Lubrificazione est. Ext. coolant Aussenkuehlung | B    | H      | Tipo Torretta Turret type Revolver typ | CHIAVI NON INCLUSE Keys not included Schluessel nicht einbegriffen |              |
|------------|--------------------------|-----|------|--------------------------------------|---|---|------|--------|--|--|--------------|
| HAS0280140 | MTSK-40                  | 1:1 | 6000 | 70Nm                                 | -   | X   | 58.5 | 117.55 | VDI STANDARD                           | CHUB46   | OKU0650004 ▪ |
| HAS0280240 | MTSK-40                  | 1:1 | 6000 | 70Nm                                 | P=70bar   | X   | 69.5 | 117.55 | VDI STANDARD                           | CHUB46   | OKU0650004 ▪ |
| HAS0260140 | MTSK-40                  | 1:1 | 6000 | 70Nm                                 | -   | X   | 58.5 | 130.25 | HYBRID 12 TURRET                       | CHUB46   | OKU0650004 ▪ |
| HAS0260240 | MTSK-40                  | 1:1 | 6000 | 70Nm                                 | P=70bar   | X   | 69.5 | 130.25 | HYBRID 12 TURRET                       | CHUB46   | OKU0650004 ▪ |

HAAS  
 MOD: SL40 - ST40/45

MODULO MOTORIZZATO RADIALE MTSK VD140  
 Radial MTSK driven tool VD140  
 Radial MTSK angetriebenes Werkzeug VD140

Subject to change without notice.



**M.T. srl**  
 Via Casino Albini 480  
 Tel. 0541/956034-957884  
 Fax 0541/956341  
 47842 S. GIOVANNI IN M. (RN)  
 e-mail: mtma@mtmarchetti.com  
 http://www.mtmarchetti.com



HAS013-2-20-K