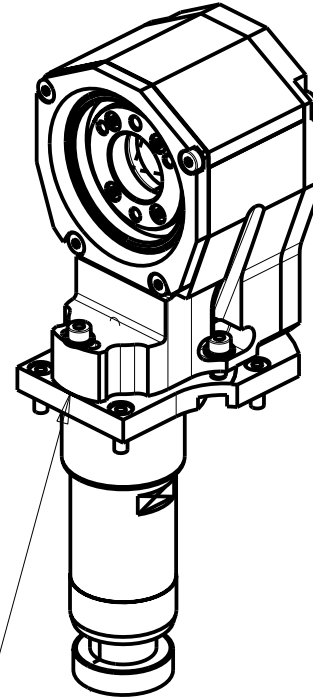
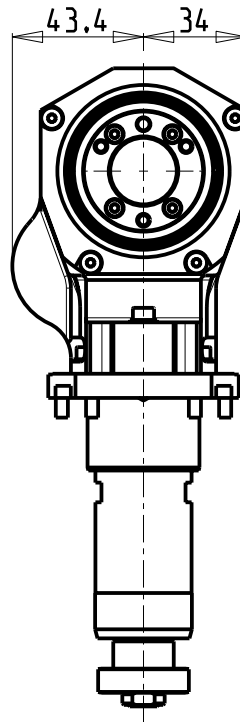
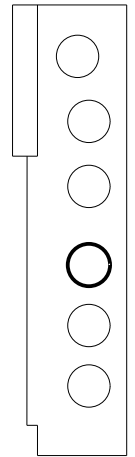
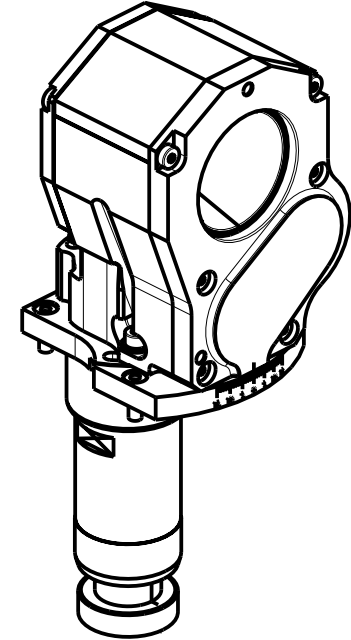


4  
Piano Inserti  
Inserts Surface  
Einsätze Fläche



INCLINAZIONE  
REGOLABILE  $\pm 15^\circ$



T13

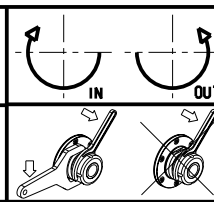
Cod. MT	I	RPM	Lubrificazione est. Ext. coolant Aussenkuehlung
NMR0070112	2:1	3000	X

Fresa non inclusa:  
Milling-cutter not included:  
Fraese nicht inbegriffen:  
SANDVIK Coromill 325 cod. 325-12AP40-16M

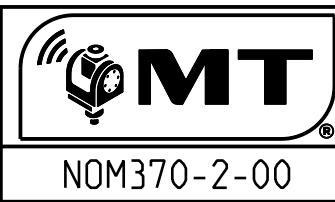
NOMURA  
MOD: NN32YB2

MODULO MOTORIZZATO TURBINATORE RIDOTTO I=2:1  
Driven whirling tool geared-down I=2:1  
Gewindewirbeleinrichtung untersetzt I=2:1

Subject to change without notice.



**M.T. srl**  
Via Casino Albini 480  
Tel. 0541/956034-957884  
Fax 0541/956341  
47842 S. GIOVANNI IN M. (RN)  
e-mail: mtma@mtmarchetti.com  
http://www.mtmarchetti.com



09/2024