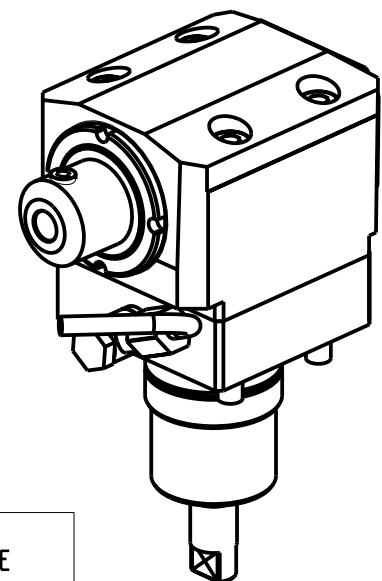


ATTENZIONE - ATTENTION - ACHTUNG

- NTJ100: solo per torretta superiore
- NTJ100: only on the upper turret
- NTJ100: nur auf dem oberen revolver



Cod. MT	Mandrino Spindel Spindel	I	RPM	Coppia Max Max Torque Max Drehmoment	Reversibile lato mandrino/contromandrino Reversible sub/main spindle side Umkehrbare Spindel-seite/ Gegenspindel-seite	Lubrificazione est. Ext. coolant Ausseukuehlung	A	A1	D	D1	CHIAVI NON INCLUSE Keys not included Schluessel nicht einbegriffen	
NKM1469125	ER25	1:1	6000	35Nm	X	X	-	82.4	-	-	CHUB36	CHSTER25
NKM1469108	WELDON 8	1:1	6000	35Nm	X	X	76.5	-	8	29	-	-
NKM1469110	WELDON 10	1:1	6000	35Nm	X	X	76.5	-	10	29	-	-
NKM1469112	WELDON 12	1:1	6000	35Nm	X	X	76.5	-	12	29	-	-
NKM1469116	WELDON 16	1:1	6000	35Nm	X	X	73.5	-	16	32	-	-

**NAKAMURA-TOME**

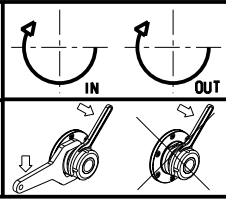
MOD: WT100 - WY100 - WY100II 12ST. - WY100V 12ST. - SUPER NTY3 - NTY3-100 12ST. - NTJ100 - SC100 - SC100X<sup>2</sup>

MODULO MOTORIZZATO ASSIALE PER POLIGONATURA INTERNA H=60mm

Axial driven tool for internal polygon-making H=60mm

Axial angetriebenes Werkzeug fuer interne Facettierung H=60mm

Subject to change without notice.



**M.T. srl**  
 Via Casino Albini 480  
 Tel. 0541/956034-957884  
 Fax 0541/956341  
 47842 S. GIOVANNI IN M. (RN)  
 e-mail: mtma@mtmarchetti.com  
 http://www.mtmarchetti.com



**NKM230-1-10**