

**ATTENZIONE - ATTENTION - ACHTUNG**

- Per lo smontaggio degli utensili utilizzare sempre la chiave di contrasto come indicato nel manuale d'uso.
- For disassembly of the tools use always the contrast key as mentioned in the user instructions.
- Fuer das Abmontieren der Werkzeuge immer den Gegenschlüssel benutzen wie in der Bedienungsanleitung erwaeht.

- Chiave inclusa
- Key included
- Schlüssel inbegriffen

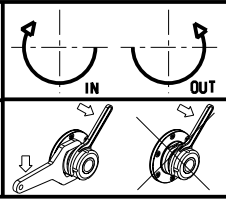
Cod. MT	Mandrino Spindle Spindel	I	RPM	Coppia Max Max Torque Max Drehmoment	Reversibile lato mandrino/contromandrino Reversible sub/main spindle side Umkehrbare Spindel-seite/Gegenspindel-seite	Lubr. interna Coolant through Innenkuhlung	Lubr. esterna Ext. coolant Ausenkuhlung	A	A1	B	D	L	CHIAVI NON INCLUSE Keys not included Schlüssel nicht einbegriffen		
NKM2401620	ER20	1:1	12000	50Nm	X	-	X	80.66	-	48	-	-	OKU0290009	CHSTER20	NEW
NKM2401820	ER20	1:1	12000	50Nm	X	P=70bar	X	80.66	-	59	-	-	OKU0290009	CHSTER20	NEW
NKM2401420	ERA20	1:1	12000	50Nm	X	-	X	69.23	-	48	-	-	OKU0290009	CHUB22	NEW
NKM2401520	ERA20	1:1	12000	50Nm	X	P=70bar	X	69.23	-	59	-	-	OKU0290009	CHUB22	NEW
NKM2401425	ER25	1:1	12000	50Nm	X	-	X	82.16	-	48	-	-	OKU0290009	CHSTER25	NEW
NKM2401625	ER25	1:1	12000	50Nm	X	P=70bar	X	82.16	-	59	-	-	OKU0290009	CHSTER25	NEW
NKM2402432	ER32	1:1	12000	50Nm	X	-	X	92.16	-	48	-	-	OKU0290009	CHSTER32	NEW
NKM2402532	ER32	1:1	12000	50Nm	X	P=70bar	X	92.16	-	59	-	-	OKU0290009	CHSTER32	NEW
NKM2401617	Ø16x17	1:1	12000	50Nm	X	-	X	-	63	48	16	17	CHUB36	CH_VTCROCE_M08	NEW
NKM2402219	Ø22x19	1:1	12000	50Nm	X	-	X	-	63	48	22	19	CHUB36	CH_VTCROCE_M10	NEW

**NAKAMURA-TOME**

WT150/250 - WT15011/25011 - WTW150 - WTS150 - SUPER NTM3 - SUPER NTJ - SC150/200/250 - SC20011 12/16 ST.  
 SC30011 16ST. - NTY3 150/250 - TW10M/MY/MM/MMY/MMYY-TW20M/MY/MM/MMY/MMYY 16ST. - WY 150/250 - AS200 15/12 ST.

MODULO MOTORIZZATO ASSIALE 12000 RPM H=55mm  
 Axial driven tool 12000 rpm H=55mm  
 Axial angetriebenes Werkzeug 12000 rpm H=55mm

Subject to change without notice.



**M.T. srl**  
 Via Casino Albini 480  
 Tel. 0541/956034-957884  
 Fax 0541/956341  
 47842 S. GIOVANNI IN M. (RN)  
 e-mail: mtma@mtmarchetti.com  
 http://www.mtmarchetti.com



**NKM150-2-12**