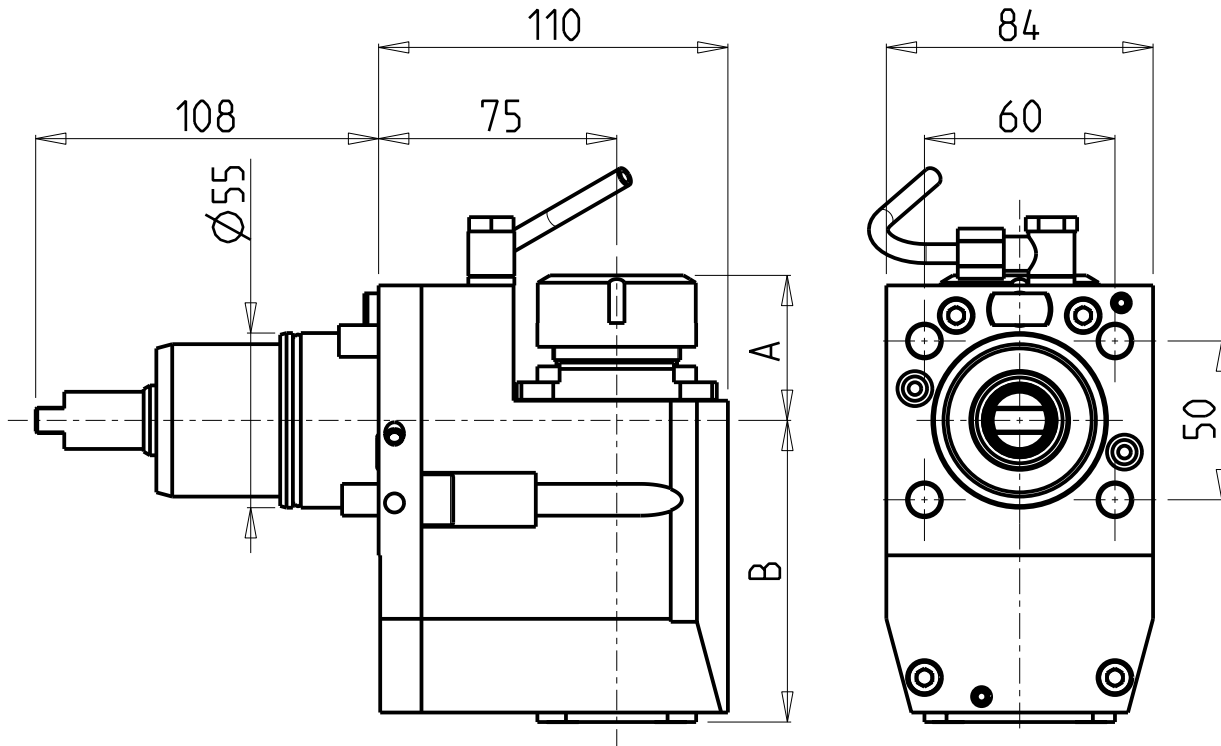
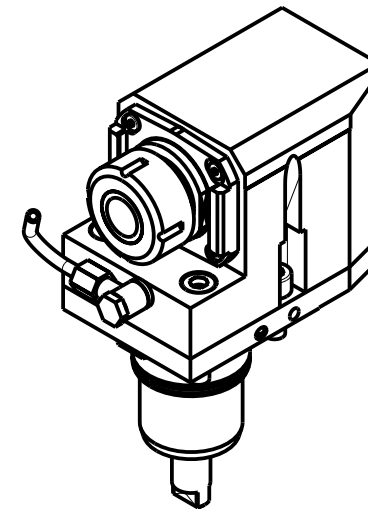


ATTENZIONE - ATTENTION - ACHTUNG

- VERIFICARE LE MISURE DI INGOMBRO PER POSSIBILE INTERFERENZA SU ALCUNI MODELLI DI MACCHINE
- Please check the overall sizes for possible interferences on some machine models
- Bitte überprüfen sie das ausmass um mögliche interferenzen auf einigen maschinen modellen zu vermeiden



- Chiave inclusa
- Key included
- Schuessel inbegriffen

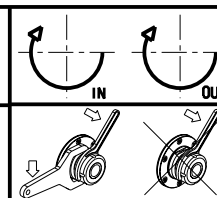
| Cod. MT | Mandrino Spindle Spindel | I | RPM | Coppia Max Max Torque Max Drehmoment | Reversibile lato mandrino/contromandrino Reversible sub/main spindle side Umkehrbare Spindel-seite/ Gegenspindel-seite | Lubr.interna Coolant through Innenkuehlung | Lubrificazione est. Ext. coolant Aussekuehlung | A | B | CHIAVI NON INCLUSE Keys not included Schuessel nicht einbegriffen | |
|------------|--------------------------|-----|------|--------------------------------------|--|--|--|------|-------|---|----------|
| NKM1080125 | ER25 | 1:1 | 6000 | 50Nm | X | - | X | 42.7 | 95 | MNZ0410005 | CHSTER25 |
| NKM1080225 | ER25 | 1:1 | 6000 | 50Nm | X | P=70bar | X | 42.7 | 108.5 | MNZ0410005 | CHSTER25 |
| NKM1080132 | ER32 | 1:1 | 6000 | 50Nm | X | - | X | 45.7 | 95 | MNZ0410005 | CHSTER32 |
| NKM1080232 | ER32 | 1:1 | 6000 | 50Nm | X | P=70bar | X | 45.7 | 108.5 | MNZ0410005 | CHSTER32 |

NAKAMURA-TOME

WT250 - WT15011/25011 - WTW150 - WTS150 - SC150/200/250 - SC20011 12/16 ST. - SC30011 16ST. - JX200/250 - SUPER NTJX - NTY3 150/250

MODULO MOTORIZZATO ASSIALE ARRETRATO H=75mm
 Axial rear-set driven tool H=75mm
 Axial angetriebenes Werkzeug zurueckversetzt H=75mm

Subject to change without notice.



M.T. srl
 Via Casino Albini 480
 Tel. 0541/956034-957884
 Fax 0541/956341
 47842 S. GIOVANNI IN M. (RN)
 e-mail: mtma@mtmarchetti.com
 http://www.mtmarchetti.com



NKM180-2-10