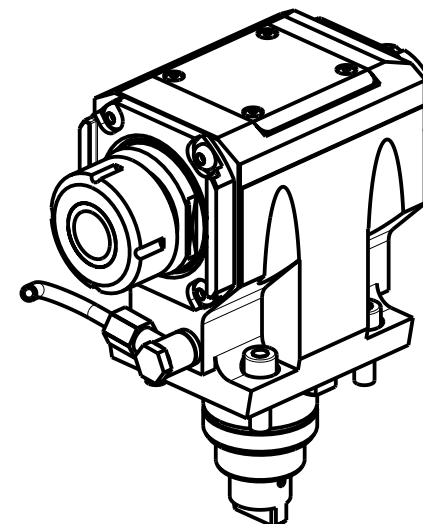
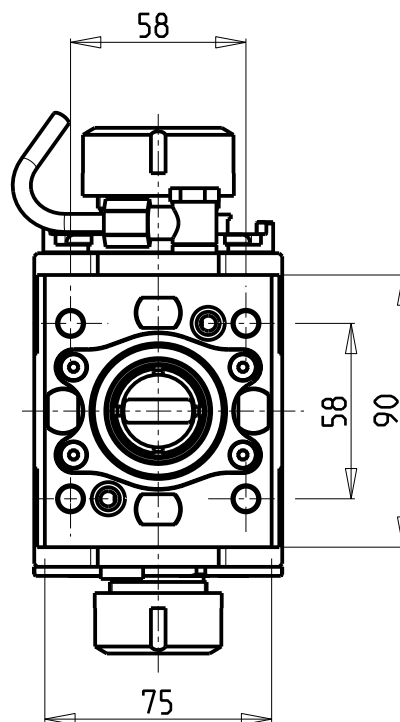
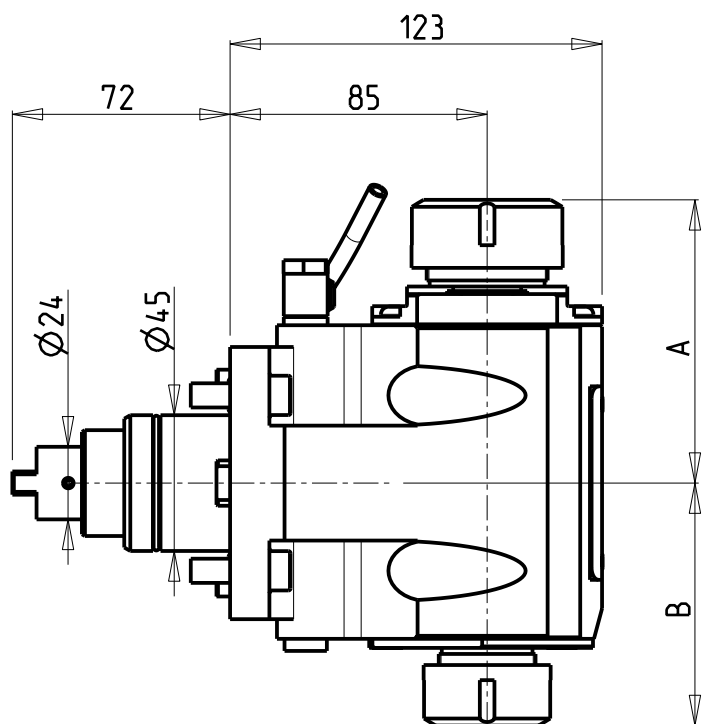


**ATTENZIONE - ATTENTION - ACHTUNG**

- Per lo smontaggio degli utensili utilizzare sempre la chiave di contrasto come indicato nel manuale d'uso.
- For disassembly of the tools use always the contrast key as mentioned in the user instructions.
- Fuer das Abmontieren der Werkzeuge immer den Gegenschlüssel benutzen wie in der Bedienungsanleitung erwaeht.



- Chiave inclusa
- Key included
- Schlüssel inbegriffen

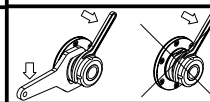
CHIAVI NON INCLUSE  
Keys not included  
Schlüssel nicht einbegriffen

| Cod. MT    | Mandrino Spindle Spindel | I   | RPM  | Coppia Max Max Torque Max Drehmoment | Reversibile lato mandrino/contromandrino Reversible sub/main spindle side Umkehrbare Spindel-seite/ Gegenspindel-seite | Lubrificazione est. Ext. coolant Ausseukuehlung | A     | B     |          |          |            |            |            |
|------------|--------------------------|-----|------|--------------------------------------|--|---|-------|-------|----------|----------|------------|------------|------------|
| SPN0033225 | ER32+ER25                | 1:1 | 8000 | 50Nm                                 | X  | X   | 93.66 | 80.16 | CHSTER32 | CHSTER25 | OKU0650004 | -          | -          |
| SPN0032520 | ERA25+ERA20              | 1:1 | 8000 | 50Nm                                 | X  | X   | 65    | 55.5  | CHUB22   | CHUB27   | OKU0650004 | CHTAER20ZC | CHTAER25ZC |


**SPINNER**  
MOD: TC300 12ST. - TC600 16ST. - TTC300 12 ST. - TTS42/65 (BMT45 SHORT) - MICROTURNS 36/52

MODULO MOTORIZZATO ASSIALE BISPORGENTE  
Axial opposite face twin driven tool  
Axial angetriebenes Werkzeug halb vorspringend

Subject to change without notice.



**M.T. srl**  
Via Casino Albini 480  
Tel. 0541/956034-957884  
Fax 0541/956341  
47842 S. GIOVANNI IN M. (RN)  
e-mail: mtma@mtmarchetti.com  
http://www.mtmarchetti.com



**SPN240-1-10**