

ATTENZIONE - ATTENTION - ACHTUNG

- Per lo smontaggio degli utensili utilizzare sempre la chiave di contrasto come indicato nel manuale d'uso.
- For disassembly of the tools use always the contrast key as mentioned in the user instructions.
- Fuer das Abmontieren der Werkzeuge immer den Gegenschlüssel benutzen wie in der Bedienungsanleitung erwäehnt.

DIN 5480

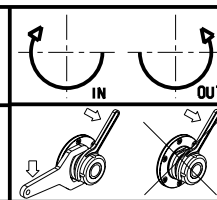
versione universale
universal version
universal version

- Chiave inclusa
- Key included
- Schluessel inbegriffen

Cod. MT	Mandrino Spindle Spindel	I	RPM	Coppia Max Max Torque Max Drehmoment	Lubrificazione est. Ext. coolant Aussenkuehlung	Reversibile lato mandrino/controlmandrino Reversible sub/main spindle side Umkehrbare Spindel-seite/ Gegenspindel-seite	A	A1	A2	CHIAVI NON INCLUDE Keys not included Schluessel nicht einbegriffen	
SAU0122125	ERA25	1:1	6000	70Nm	X	X	124.33	-	-	CHUB46	CHUB27
SAU0122232	ERA32	1:1	6000	70Nm	X	X	131.53	-	-	CHUB46	CHUB32
SAU0122140	ER40	1:1	6000	70Nm	X	X	143.66	-	-	CHUB46	CHSTER40
SAU0122322	Ø22x19	1:1	6000	70Nm	X	X	-	116	-	CHUB46	CH_VTCROCE_M10 *
SAU0122425	WELDON25	1:1	6000	70Nm	X	X	-	-	137	-	-

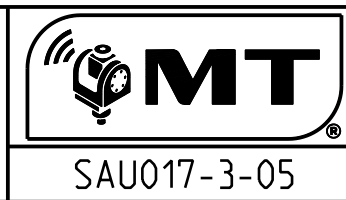
SAUTER
VDI 40

MODULO MOTORIZZATO ASSIALE DISASSATO 60mm VDI40 DIN 5480
Axial driven tool re-directed by 60mm VDI40 DIN 5480
Axial angetriebenes Werkzeug achsversetzt um 60mm VDI40 DIN 5480



M.T. srl

Via Casino Albini 480
Tel. 0541/956034-957884
Fax 0541/956341
47842 S. GIOVANNI IN M. (RN)
e-mail: mtma@mtmarchetti.com
http://www.mtmarchetti.com



Subject to change without notice.

09/2024